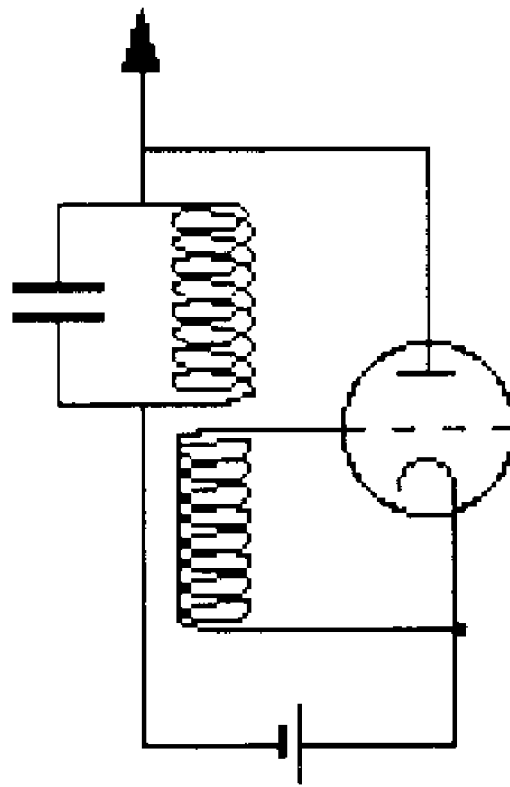
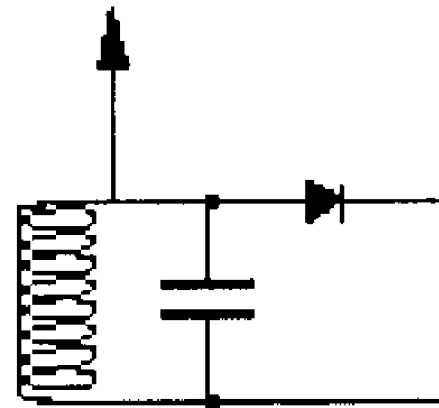


# Sender / Empfänger (Radiowellen)

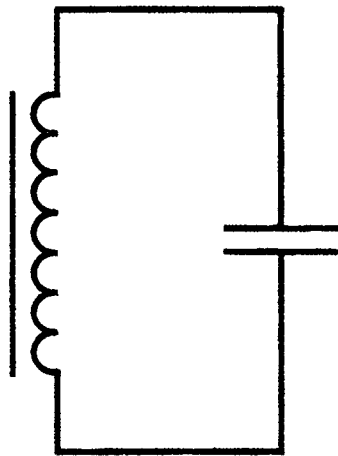


Sender

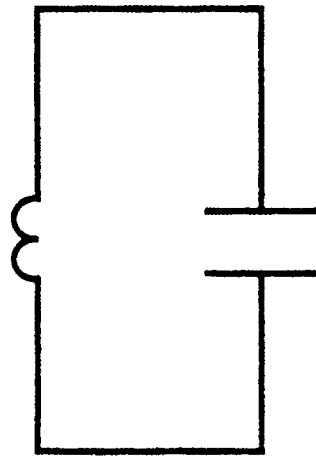


Empfänger

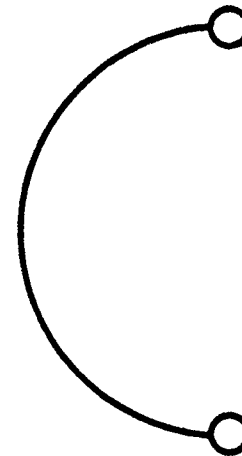
# Elektrischer Schwingkreis     Hertz'scher Dipol



$f_0 \approx 50 \text{ Hz}$



50 kHz



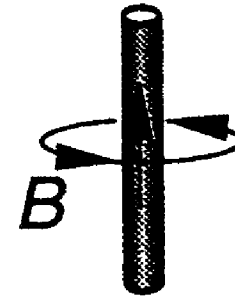
50 MHz



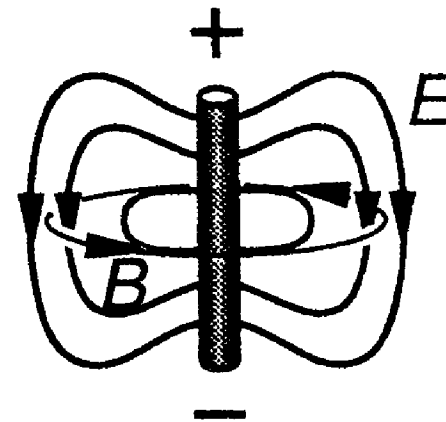
500 MHz

# Hertz'scher Dipol

$$t = t_0$$

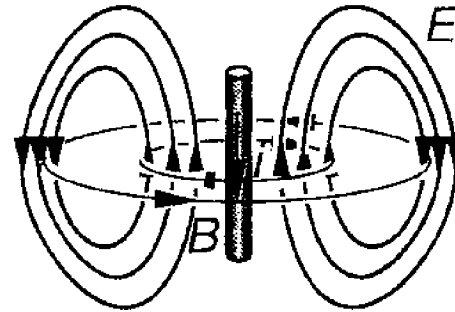


$$t = t_0 + \frac{1}{4}T$$

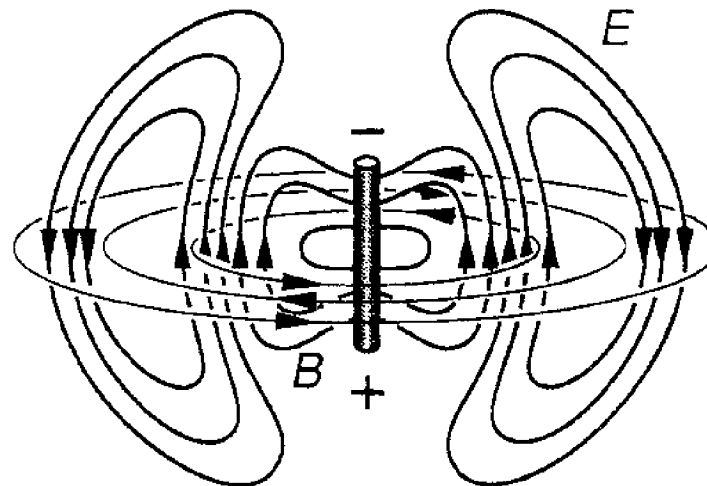


# Hertz'scher Dipol

$$t = t_0 + \frac{2}{4}T$$

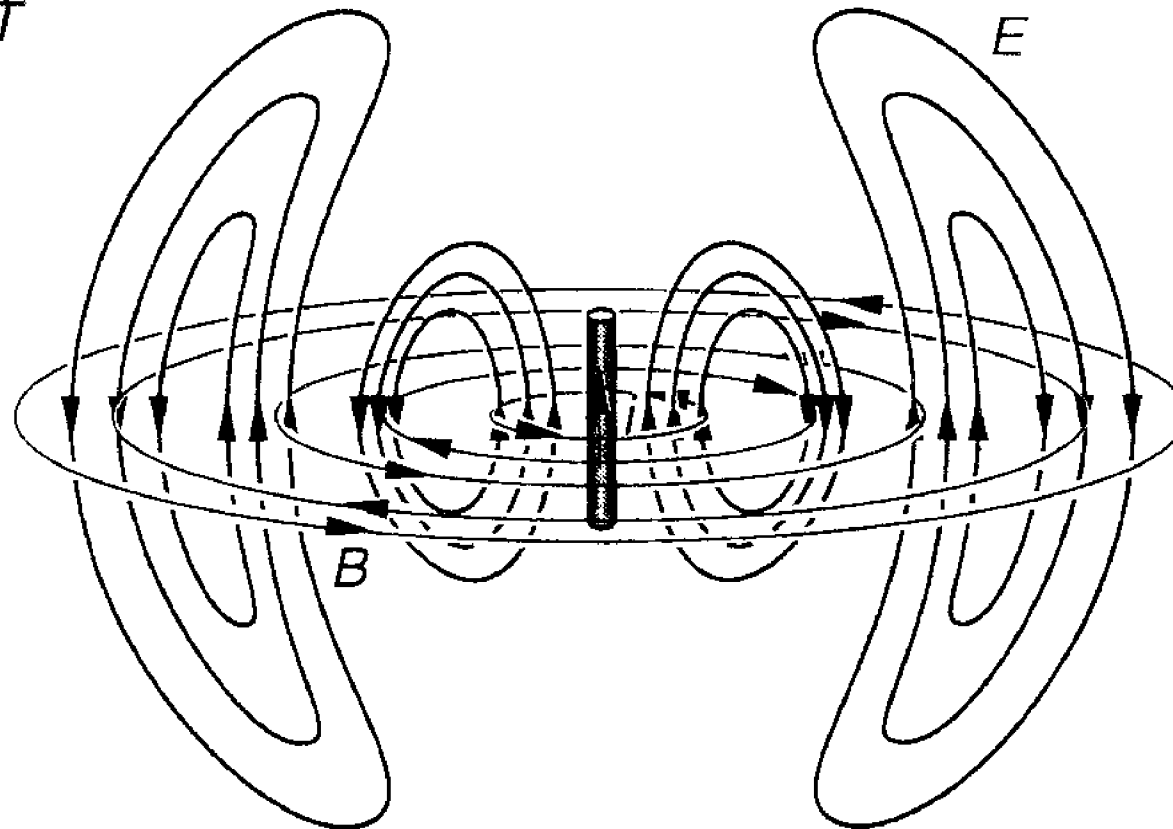


$$t = t_0 + \frac{3}{4}T$$

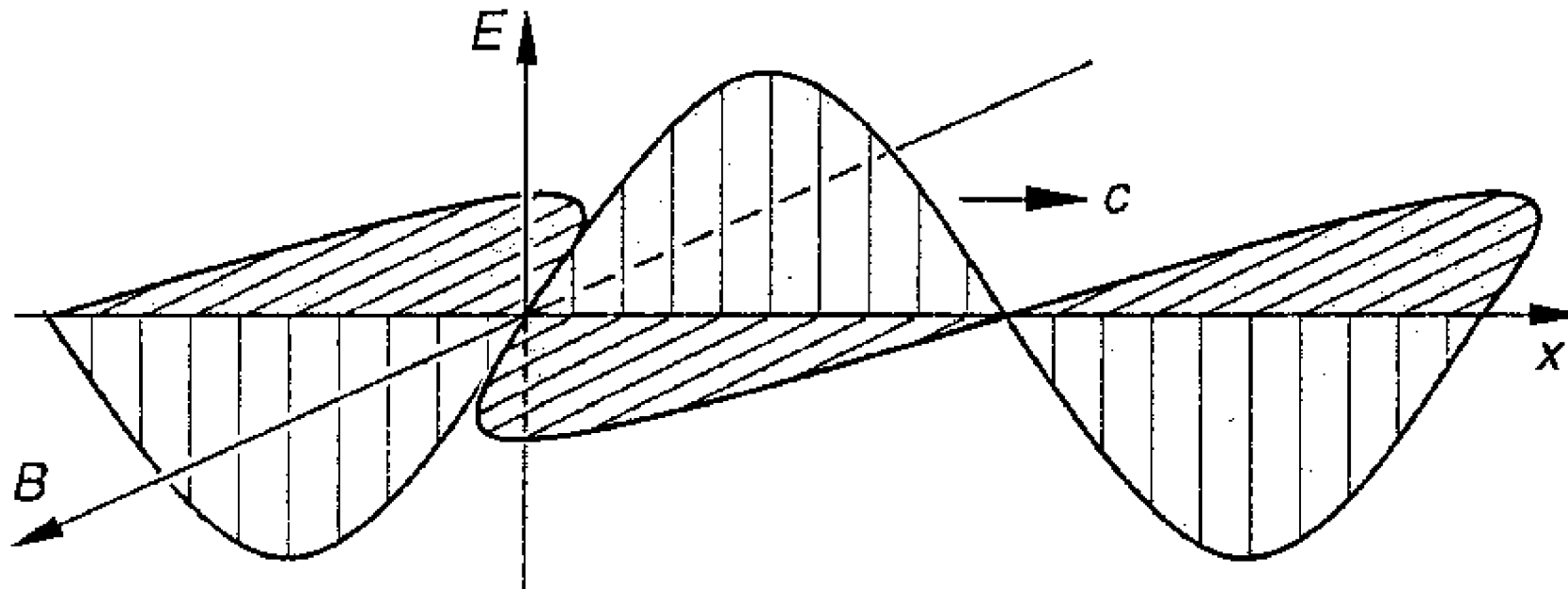


# Hertz'scher Dipol

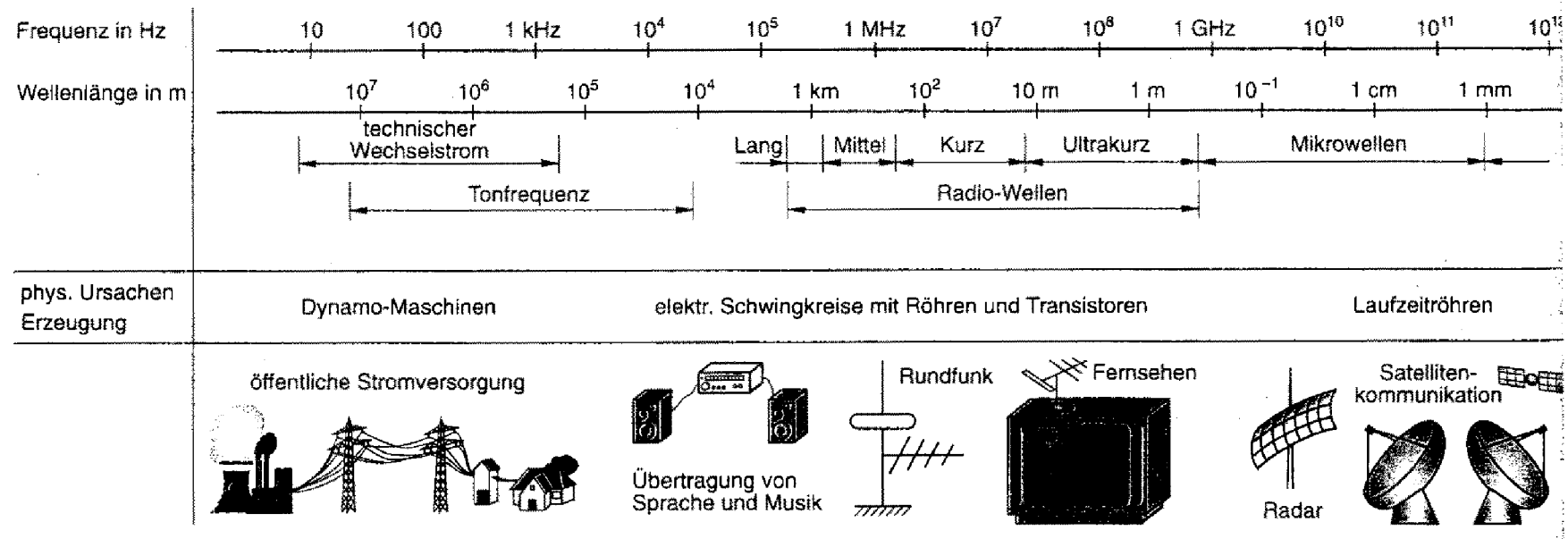
$$t = t_0 + T$$



# Elektromagnetische Welle



# Elektromagnetisches Spektrum



# Elektromagnetisches Spektrum

